



# Chinese Region 6 Brush Painters Society

## News Letter

Welcome to the July 2015 newsletter

### What have we been doing?

In April we tackled Spring growth using blossom from the tree outside the library and plants brought from home. The work was gong bi style on cicada sized paper.

Jane Evans taught an excellent session on Spring flowers on Xuan paper. Everyone who attended was really pleased with their results. Jane has agreed to teach a landscape session in the Autumn.



In May we worked on upright landscape compositions paintings, photographs and pictures and notes on Chinese landscape composition from previous newsletters. The work was done on practice Xuan—our final paper.

In June we worked on flower compositions—again using flowers from members gardens and notes from Leilei's teachers and reps session on Chinese Flower Compositions. This time people choose the paper and style they preferred to use.

### Sunday Workshops

Our meetings are held at Park Lane Village Centre in Harefield and are held on the first Sunday of every month.

We have decided to look at landscape elements and different styles of landscape and Phyllis is ordering some new papers for us to try which will hopefully arrive in the early Autumn.

Aug 2nd—Man made structures including buildings, boats, bridges, etc.

Sep 6th—Trees— including styles for feature trees, grouping and background trees

Oct 4th—Rock Textures—including dots, hemp, scales

Nov 1st—Rock Structures—including crags, ridges, gorges, embankments, etc.

Dec 5th—Mi Fu landscapes (dots)

Sunday workshops cost £2 and start at 13:00 with a demonstration of the subject and guidance during the afternoon.

### Materials Order—Please NOTE

We have decided to delay the materials order until the October newsletter to ensure that Phyllis doesn't have to deal with the order in the run up to Christmas and store the uncollected items.

The aim is to get the order for the AGM to reduce the number of uncollected items left in the cupboard. Aim is to avoid the losses we encountered last time.

### Tutored Workshop

**November 29th - Landscape with Jane Evans.**

Those painting with Jane earlier in the year asked if she would be willing to teach a landscape session. The answer was yes!

Please complete the enclosed form and return it to Jean Gray with your cheque and your email address or a stamped addressed envelope if you don't have email.

## Paint Spring Flowers with Jane Evans

Sadly, I wasn't at the session with Jane so there are no notes on "how to" but, along with the tulips on page 1, here are the pictures that Jean took on the day of some of Jane's work.



If you have anything you would like to include in the next news letter, you can send it to me

Marion





Landscape by Qu Leilei using many of the compositional elements

## Chinese Landscape Compositional Elements

These are the six compositional elements that make up Chinese landscape compositions. Qu Leilei did not cover them with us when he taught landscape composition in 2004.

### The 6 Small Compositional Forms

#### 1. Alignment

These elements are horizontal repeating sets / rows of vertical objects like reeds or trees. Although the objects are in rows they must vary in size and position.



#### 2. Layering Up

Layer up by adding texture to the mountains above the lines – like adding trees to the tops of mountains. Layering up forces the focus of the picture towards the top of the frame. Start in the foreground and work back and up. For mountain ranges follow the spine up creating the layers and

remember that there must be a way up and through.

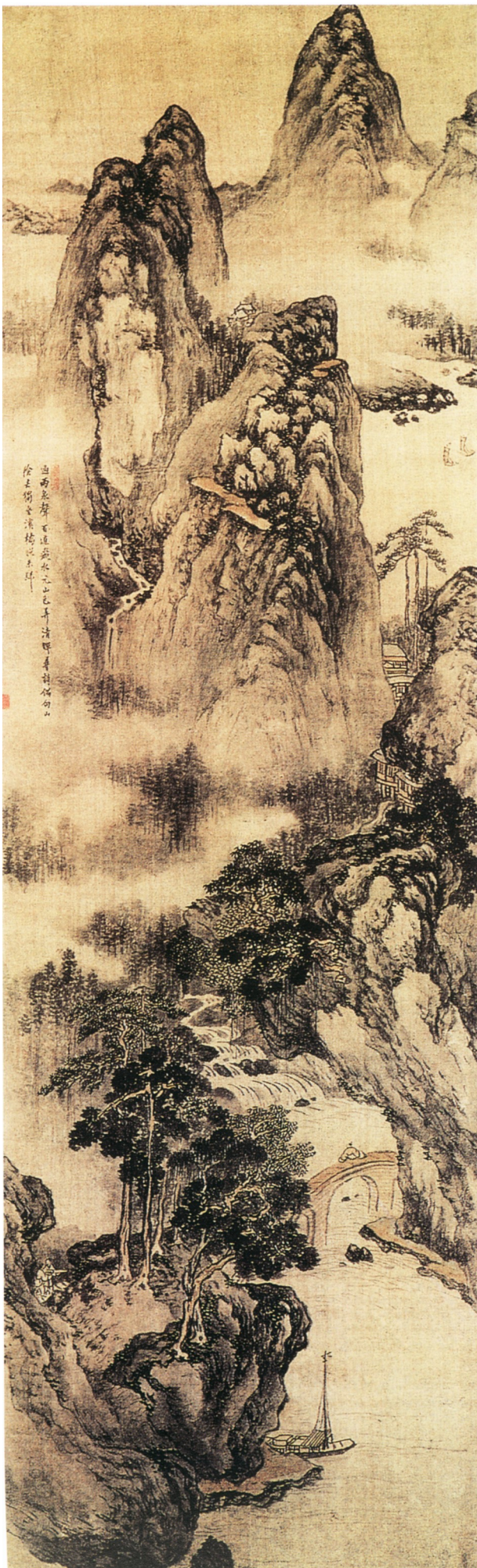


#### 3. Layering Down



Layering down forces the focus of the picture towards the bottom of the frame. Layer down pictures often have a group of trees as the foreground focus supported by low distant mountains. Layer down by adding texture to the mountains below the lines.





#### 4. Open and Closed

The Open areas are the blank space. Blank is not necessarily empty – it can contain washes. The size and shape of the blank spaces should be interesting and varied. Open spaces are Closed by the detailed elements / solid features that surround them. Balancing the Open and Closed elements in the landscape is crucial to creating a good landscape painting.

Both Open and Closed elements can extend out of the painting.



#### 5. Make a Gap

Gaps separate one element of a painting from another (as in Echoing and Separated compositions). When creating a Gap in the picture avoid horizontal and vertical lines and creating geometric spaces.

Gaps don't have to be empty they can be built up with washes.



#### 6. The Living Eye

The Living eye is the focus of the Qi in the painting. It contains living, man-made or moving elements like trees, plants, people, animals, buildings, boats, bridges or moving water.

All landscape compositions must contain a living eye.



## Exhibitions

### Ashmolean Museum



From Palace to Studio: Chinese Women Artists, 1900 to the present

10 Mar 2015 to 27 Sep 2015

At the beginning of the 20th century, the palace retainers of China's Empress Dowager Cixi included a 'ghost painter'. This accomplished female artist was tasked with producing paintings in the Empress's name, and only rarely signed her own works.

This exhibition begins with one of her paintings and goes on to document the emergence through the 20th century of female painters as independent artists with their own incomes, ateliers and international reputations.

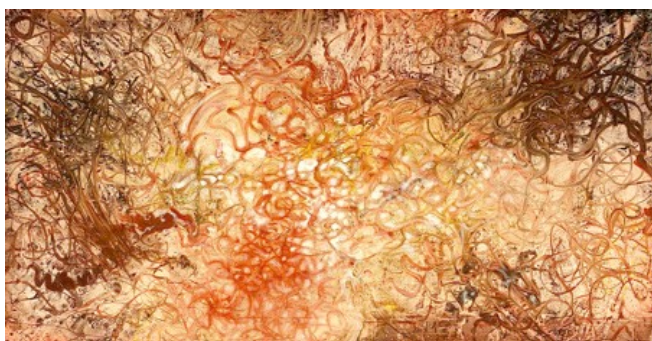
Gallery 11 | Admission Free | [More Info](#)

### The Hua Gallery

Unit 7B, G/F, Albion Riverside, 8 Hester Road, Battersea, London, SW11 4AX

**Yi Xuan, Meditations**

February to June 2011



Hua Gallery is delighted to announce its inaugural exhibition, running from February till June 2011, and is proud to introduce, for the first time in London, the works by Buddhist artist Yi Xuan.

Yi Xuan (born 1965) is acknowledged in China as an inspirational and spiritual contemporary artist. Yi Xuan has recently held successful solo exhibitions across China, and is receiving strong interest from within China, and increasingly from Europe and the US. The artist's works, created during hours of deep Buddhist meditation, continues to fascinate and intrigue art lovers and collectors worldwide.

### Royal Academy of Arts

Burlington House, Piccadilly, London, W1J 0BD

Ai Weiwei

19th September—13 December

Main Galleries, Price £15

2015 the RA welcomes Ai Weiwei as an Honorary RA. Ai Weiwei is a major artist and cultural



phenomenon. In September 2015, the Royal Academy will present a landmark exhibition of the Honorary RA, Ai Weiwei. As the first significant British survey of his artistic output, the exhibition will include major works spanning Ai Weiwei's career, as well as including new work by the artist.

Ai Weiwei has worked in a variety of different contexts, referencing Chinese art and culture through both the choice of traditional materials and interventions with original historic objects, as well as exploring international Western contemporary art. The idea of creative freedom, especially the increasingly political aspect of much of his work, will be a prominent feature and underpin much of the exhibition.

### British Museum

#### Display of Chinese seals, Room 33.

Free access

A chance to see some of the Museum's collection of 360 Chinese official and personal seals dating from the Han dynasty (206 BC-220 AD) until today.

## Beaconsfield Spring Event

### Davina Besson

This Spring we re-visited the Beaconsfield Art Fair to promote our Region 6 Chinese Brush Painting classes and exhibit some of our work. The Art Fair is held twice a year in May and December at The Beaconsfield School, a specialist arts college. Surrounding the numerous striking paintings on exhibition were a wide range of crafters including those specialising in porcelain and stoneware, wood turning, jewellery and textiles. Our stall was placed near the main entrance which gave us a lot of exposure to the art enthusiasts visiting the exhibition.

The fair opens on the Friday evening and attracts many visitors. A free glass of wine available to aid the appraisal of works on offer! We had significant interest from several groups who were attracted by our display featuring an Origami tree, painted fans, cards and giveaway Chinese fortune cookies. Margaret demonstrated calligraphy on the Friday evening and we chatted to many visitors about the society and handed out information about our classes.

Members who attended the event believe we have built on our previous experience of exhibiting. If you have any bright ideas for future events, want to suggest ways to promote our group, or you just want to get involved, please contact the CBPS Region 6 Organising Group. Sheila, Jacki, Karen and Malcolm, Davina, Jean, Margaret etc.

### Please note: this year, there will be a Beaconsfield Christmas Market

on Saturday 21st November 11:00. to 15:00. We need to decide if we will attend.

## IMPORTANT PLEASE READ!

### Region 6 Library

#### Jean Gray

I have checked the books in the library today (22nd April) and the above books are not accounted for. They have not been signed out but they are missing. Can you PLEASE check your shelves and paint box and see if you have any of them and return them to the cupboard.

The books missing are:

- 12. Meticulous Birds
- 20. Insects (part of boxed set)
- 23. Flowers of four seasons --1 Spring
- 34. Chinese calligraphy Qui Lei Lei
- 36 the simple art of Chinese brush painting. Qu Lei Lei
- 48. Paintings. Chao Shao-An
- 51. Fan shaped. Yu Chung-Lin
- 88. Elementary of flower painting
- 97. Elaborate style of flower and bird painting
- 111. Method of drawing the ancient figures

The Seals which were left to Region 6 by Joyce for everyone to make use of have been reduced from 6 to 4.(3 have been returned since my email—M) Could you also please check if you have any of these?

For future reference, unlike books—seals should not be taken from the venue.

Both books and Seals were meant for the use by all members of Region 6 and to be borrowed only NOT permanently relocated!

Please return anything you find to the cupboard or on a shelf.

Thank you

## CBPS Website

The Chinese Brush Painters Society website has been seriously revamped by Richard—our Region 6 web designer.

Have a look and see what you think <http://www.cbps.co.uk>



## Contact Details

Contact details for the committee and those representing the classes are provided below to allow members to make contact.

### Class reps

Wednesday Jean Gray

Thursday Anna Lau

Bianca Deegan

Saturday Tina Clarke

### Committee Contacts

Chairperson Margaret Wall

(Margaret also teaches the Saturday class)

Secretary Marion Dearlove

(Marion teaches the monthly Sunday class)

Treasurer Sarah Turner

Membership Laura Fordery