



# Chinese Region 6 Brush Painters Society

## News Letter

Welcome to the October 2015 newsletter

### What have we been doing?

In July we tackled watery landscapes using photographs, pictures and paintings to construct a composition. We also looked at painting mountains using wash only (as seen in the example below by Professor Wu Changan).



This led into a discussion on painting landscape elements. So, we agreed to stay with the landscape theme and look at individual landscape elements and then move on to different styles.

In August we looked at man made objects including boats, bridges, houses etc. and how to use them in paintings.

In September we moved on to trees looking at the different shapes of trunks, textures used on bark, the different styles on branches and leaves and how to group trees together to form feature groups and how to use them in the background.



### Norma Kennedy (1940-2015)

It is with great sadness that I have to advise you that our member and friend, Norma Kennedy has lost her long and gruelling fight with Cancer.

Norma was a feisty girl and, having been diagnosed 4 years ago, she never gave in and had been gardening and painting—Chinese brush of course—until the last 4 weeks of her life.

Andy, her husband, has assured us that she died with out pain and that the whole family was with her.

She will be missed by everyone who knew her.

### Materials Order

If you would like to order any Chinese Brush Painting Materials, please complete the attached form and return it to Phyllis by **31st October 2015** to ensure that your order is included.

We had added some interesting new papers and you should all receive samples to have a look at and keep with your previous samples.

Those of you that are receiving this newsletter by post will find them in the envelope. Those receiving it by email will be getting them by post. Watch out for them.

Please note that, sadly, the double sided silk fans are no longer available and that we have removed the 3 ply Xuan because it is now £4.50 per sheet!

Also, be reminded that we have gone back to the Marie's colours because of the problems we had with the new alternate indigo.

Remember there are single paint tubes in the cupboard. Price 50p each. Ask your class rep if you need any.

### Tutored Workshop

**November 29th 10:00—16:00**

#### Landscape with Jane Evans.

There are still a couple places left on Jane's Landscape painting workshop. If you would like to join us, please complete the enclosed form and return it to Sarah Turner with your cheque and your email address or a stamped addressed envelope if you don't have email.

## Landscape Painting (1)

The following notes come from the CBPS Teachers and Reps Workshop Landscape Composition session held in Harefield on 11th May 2008 that was delivered by Qu Lei Lei. They will be spread over 2 newsletters.

These notes do not cover how to paint rocks and trees, in terms of what strokes and colours to use. You will need to look this up elsewhere for this information. These notes focus entirely on composition.

Lei Lei explained that the Chinese word for landscape

# 山水

is constructed from the radicals for mountain (shān) and water (shuǐ) and that compositions traditionally contain a lot of both of these - along with little and big trees, little and big rocks, grasses and mosses, moving water, clouds and mist.

Lei Lei explained that the Chinese don't think really think in terms of composition they think in terms of "the ways of arranging things". There are a series of foundation "ways" notably:

- The way of rocks
- The way of trees
- The way of water
- The way of mist and clouds

which, when combined by a skilful artist, develop relationships that generate the life force or spirit (Qi) of the painting. To create Qi in a painting you need to

observe nature, make sketches and plan the picture you want to create using what you have observed.

The talk covered landscape in terms of the zhong fa principles of:

**Great Composition** - these are the arrangements for whole pictures and determine the type of life force that the artist wants to create. There are 8 forms which are:

- upright
- open-flat
- diagonal
- concentrated
- separated
- unbalanced
- Echoing
- meandering.

**Small Composition** (see July Newsletter for details) - these are the 6 elements through which the 8 Great compositional forms are created. These are the 6 forms:

- Alignment,
- layering down (horizontal layers),
- layering up (vertical layers),
- open and closed,
- making a gap
- living eye (the focus of the Qi i.e. the "living" area of the picture such as a waterfall, moving water, building, bridge, boat, figure or animal).





## The 8 Great Compositional Forms

The flip chart page below came from a Missenden session and it provides the Chinese names (in pin yin and Chinese characters) for the 8 elements.

8 Compositions.			
1.	zhi Li	直立式	Up right
2.	Ping zhan	平展	Flat open
3.	Qing Xie	傾斜	Diagonal
4.	Ning Ju	凝聚	Concentrated
5.	Fen Jiang	分離	Separated
6.	Hu Ying	呼應	Echoing (opposite)
7.	Pian Sheng	偏勝	Unbalance
8.	Yu Hui	迂迴	Meandering

The in the following sections illustrate the 8 compositional elements (4 in this newsletter—4 in the next). All have clear foreground, mid ground and background areas and are designed to allow the eye to travel around the picture.

### 1. Diagonal Composition

The main flow in these compositions runs diagonally across the picture from bottom right to top left or bottom left to top right. The can be viewed as if from below or above.



### 2. Upright Composition

These pictures tend to be tall and narrow and are





normally viewed as if from below. The whole life force is travelling up the picture from top to bottom or from bottom to top taking the eye with it.

### 3. Concentrated Composition

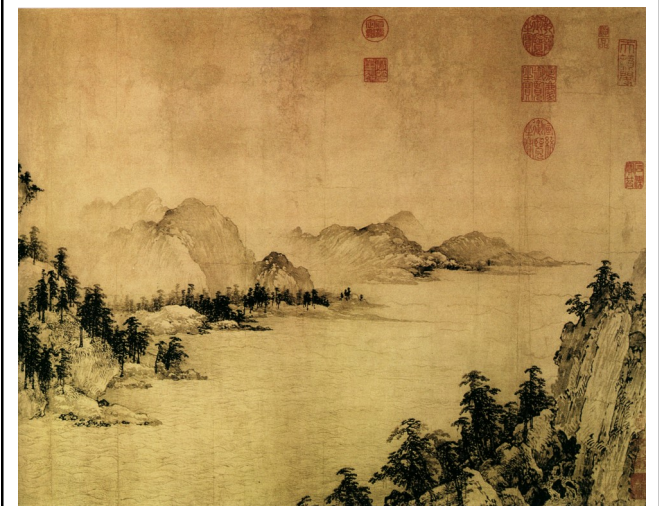
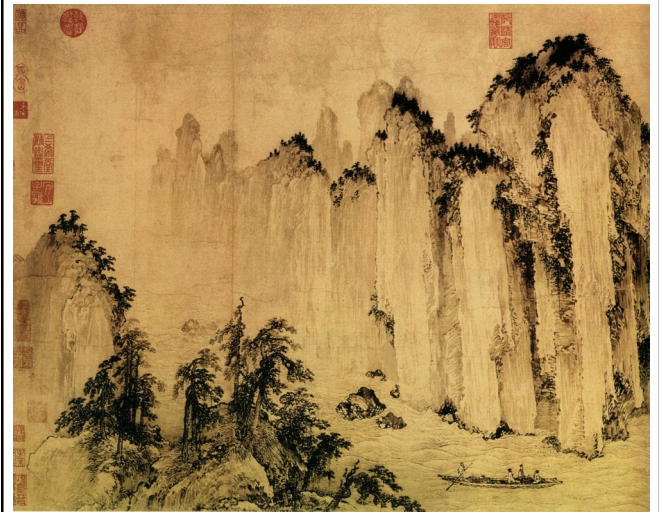
Everything appears in the middle of the frame – nothing significant at the edges BUT ensure that the subject itself is not in the exact centre of the frame.



### 4. Separated Composition

These pictures show the top of one element and the bottom of another separated by an open space.

The space can contain water with boats in it or clouds or mist or an just be empty.



### Contact Details

Contact details for the committee and those representing the classes are provided below to allow members to make contact.

#### Class reps

Wednesday Jean Gray  
Thursday Anna Lau  
Bianca Deegan  
Saturday Mary Burne

#### Committee Contacts

Chairperson Margaret Wall  
(Margaret also teaches the Saturday class)  
Secretary Marion Dearlove  
(Marion teaches the monthly Sunday class)  
Treasurer Sarah Turner  
Membership Laura Fordery



## Exhibitions

### Royal Academy of Arts

Burlington House, Piccadilly, London, W1J 0BD

#### Ai Weiwei

19th September—13 December

Main Galleries, Price £15

2015 the RA welcomes Ai Weiwei as an Honorary RA. Ai Weiwei is a major artist and cultural phenomenon.

In September 2015, the Royal Academy will present a landmark exhibition of the Honorary RA, Ai Weiwei. As the first significant British survey of his artistic output, the exhibition will include major works spanning Ai Weiwei's career, as well as including new work by the artist.

Ai Weiwei has worked in a variety of different contexts, referencing Chinese art and culture through both the choice of traditional materials and interventions with original historic objects, as well as exploring international Western contemporary art. The idea of creative freedom, especially the increasingly political aspect of much of his work, will be a prominent feature and underpin much of the exhibition.



### British Library

St Pancras, London, 9:30-18:00

#### Treasurers of the British Library—Temporary Exhibition—Beyond Paper 3000 years of Chinese Writing

From 8th September—13th December

Admission Free

The earliest known examples of Chinese writing dates from over 3,000 years ago and is found on inscribed bones used in divination rituals. In this small display, oracle bones are displayed alongside Chinese manuscripts written on other materials including wood, silk and paper. Many of the objects on display are being made available on line in collaboration with the support of various Chinese institutions—so, the oldest known documents are

being made available through modern technology. More on this to follow when details are known.



#### Talk—The Story of China: Michael Wood

Friday 23rd October 18:30-20:00 £10/£8/£7

A talk on some of the themes that will be portrayed in his new BBC series—The Story of China which will reflect on the Treasures of the British Library temporary exhibition. The television series will illustrate how Chinese civilisation developed telling the stories of rulers, pets, artists, philosophers and ordinary men and women. So, watch out for it.

#### Ashmolean Museum, Oxford

Tuesday-Sunday 10:00-17:00

#### Tasting China—food and drink in Chinese Art

13th October—13th December 2015

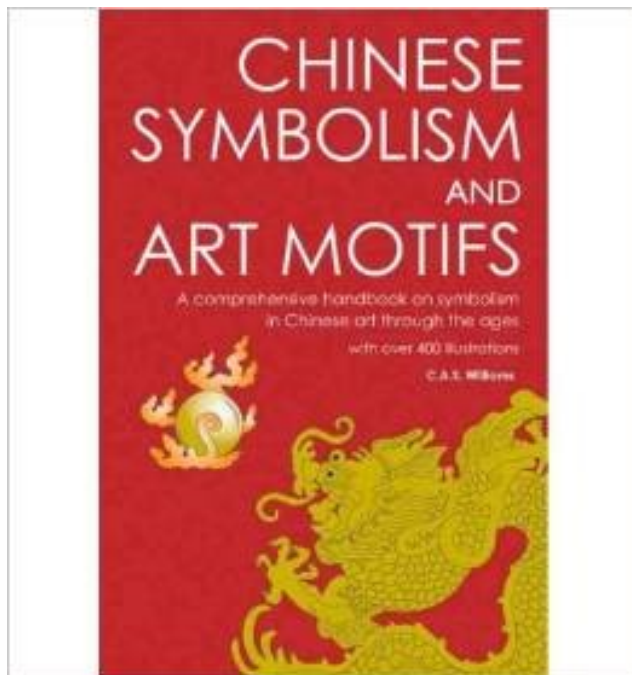
Admission Free

Through paintings and prints, the exhibition explores the different dimensions of food and drink in Chinese landscapes and social life.



## Books

### **Chinese Symbolism and Art Motifs: A Comprehensive Handbook on Symbolism in Chinese Art through the Ages**



Charles Alfred Speed Williams (Author)

This fourth revised edition of Chinese Symbolism and Art Motifs, first published in Shanghai in 1941.

The Eight Immortals, the five elements, the dragon and the phoenix, yin and yang—representations of these important cultural symbols are pervasive in Chinese literature, art and architecture.

Without an understanding of the significance of symbolism, much Chinese history, folklore and culture can not be fully appreciated.

In this comprehensive handbook, C.A.S. Williams offers concise explanations—and over 400 illustrations—of these essential symbols and motifs.

- Paperback: 384 pages
- Publisher: Tuttle Publishing; 30 April 2006
- Language: English
- ISBN-10: 080483704X
- ISBN-13: 978-0804837040
- Product Dimensions: 15.2 x 2.8 x 22.9 cm
- Price: £21

If you have anything you would like to include in the next newsletter, you can send it to me

Marion

## Sunday Workshops

Our meetings are held at Park Lane Village Centre in Harefield and are held on the first Sunday of every month.

Oct 4th—Rock Structures—including crags, ridges, gorges, embankments, etc. and Rock Textures—including dots, hemp, scales

Nov 1st—**NO CLASS**

Dec 5th—**NO CLASS**

**Jan - There will be no class in January**

Feb 7th—Mei Fu and Ma Yuan Landscapes. Sunday workshops cost £2 and start at 13:00 with a demonstration of the subject and guidance during the afternoon.



Sunday workshops cost £2 and start at 13:00 with a demonstration of the subject and guidance during the afternoon.